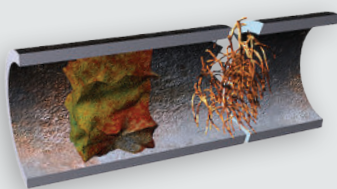


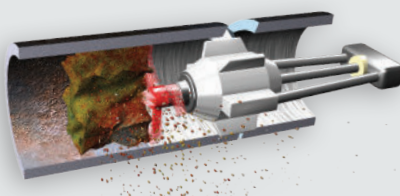
REPAIR YOUR PIPES FROM THE INSIDE WITH NUFLOW.

NuFlow is a proven pipe lining technology that restores and renews old, broken or corroded pipes to a "like new" condition without the need to remove or replace them. Our NuDrain cured-in-place pipe lining process does not require any digging or destruction to your property and therefore translates to less mess, less cost, and minimal disruption to your everyday business.



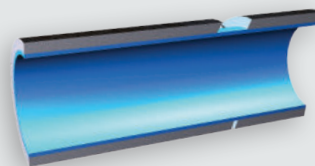
STEP 1: INSPECTION

Inspect the existing pipes for any corrosion, roots, or cracks using a drain camera.



STEP 2: CLEANING

Debris, roots and corrosion are removed from the pipes using NuFlow's proprietary tools.



STEP 3: LINING

NuFlow liner is pulled into the pipe and cures in place, creating a clean, strong "pipe within a pipe". A final inspection is performed for quality assurance.

nuflow
WE FIX PIPES

www.nuflowtech.com | 800.834.9597



**Annheuser-Busch Brewery:
Sanitary Sewer Rehabilitation**

LOCATION: Williamsburg, Virginia

SITUATION: 200 feet of 8" cast iron sanitary sewer line was failing. The sanitary system was located deep under floors, foundations and inside walls. The customer needed a long-term solution.

SOLUTION: Working with general contractor ESGI, NuFlow was able to rehabilitate the pipe system using our NuDrain structural lining, saving the customer the destructive, time-consuming and costly option of a re-pipe.



**Kewaunee Nuclear Power Plant:
Underground Drain Rehabilitation**

LOCATION: Carlton, Wisconsin

SITUATION: Part of a 6" diameter drainpipe encased in concrete was leaking 10 feet under a concrete structure. Breaking through the concrete to access the pipe was not an option.

SOLUTION: NuFlow rehabilitated the leaking pipe with our NuDrain pull-in-place structural liner and created a seamless pipe inside the host pipe without disrupting the plant's normal operations. NuFlow contracted a scuba diver to work the discharge point below the waterline in Lake Michigan.



**General Atomics:
Sanitary Drain Line System Rehabilitation**

LOCATION: San Diego, California

SITUATION: Sanitary drain line experienced backups and reduced water flow because of cracking, root intrusions and weakened joints. The system consists of 6" clay pipe connected to 4" PVC pipe, beneath a layer of asphalt.

SOLUTION: The pipe is below an entrance to the building, so NuFlow's trenchless technology prevented disruption to the office's normal operations. NuFlow cleaned the pipe system, restoring flow, and then installed our NuDrain structural liner to prevent future problems.