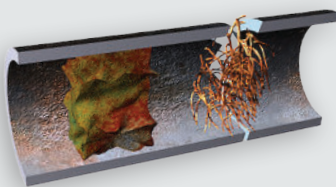


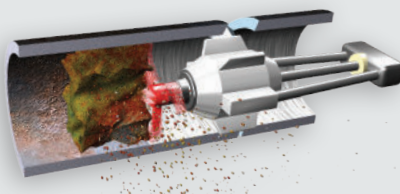
REPAIR YOUR PIPES FROM THE INSIDE WITH NUFLOW.

NuFlow is a proven pipe lining technology that restores and renews old, broken or corroded pipes to a “like new” condition without the need to remove or replace them. Our NuDrain cured-in-place pipe lining process does not require any digging or destruction to your property and therefore translates to less mess, less cost, and minimal disruption to your everyday business.



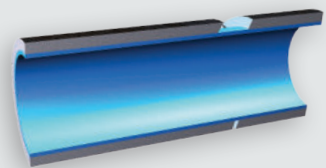
STEP 1: INSPECTION

Inspect the existing pipes for any corrosion, roots, or cracks using a drain camera.



STEP 2: CLEANING

Debris, roots and corrosion are removed from the pipes using NuFlow's proprietary tools.



STEP 3: LINING

NuFlow liner is pulled into the pipe and cures in place, creating a clean, strong “pipe within a pipe”. A final inspection is performed for quality assurance.

nuflow
WE FIX PIPES

www.nuflowtech.com | 800.834.9597



**Southern California Theme Park:
Underground Drain Line Rehabilitation**

LOCATION: Southern California

SITUATION: 14" to 24" diameter pipes, including a custom 14" by 19" transitional 90-degree elbow, ran beneath large pools, experienced chronic failure. The customer needed a long-term solution that would keep the pool and surrounding landscape intact, as well as cause as little disruption to the theme park as possible.

SOLUTION: NuFlow installed our NuDrain structural liner using our unique and innovative pull-in-place technology. This liner will protect the inside of the pipeline and prevent leaks. The customer was so happy with our solution that the company scheduled more work for us to do in that park as well as others across the nation.



**Target: Underground Sanitary Branch Line
Rehabilitation**

LOCATION: Chula Vista, California

SITUATION: An aged sanitary branch line below the Target's food court experienced backups and limited flow. This pipeline is located beneath the concrete and product displays. The pipeline was jetted years prior, but the problems still returned. The customer wanted a long-term solution that would not disrupt operations.

SOLUTION: NuFlow rehabilitated the failing pipe without having to move or unplug any equipment. Our technicians worked while the store was closed at night, and the food court operated normally during business hours. NuFlow's pull-in-place structural liner was installed to prevent future problems.



**Temple Emanu-El:
Roof Drain System Rehabilitation**

LOCATION: New York, New York

SITUATION: The 10 roof drains encased in concrete pillars were rotten, had leaks and could have destroyed the historical temple from within. The roof drains run through 12-story columns in the middle of the synagogue.

SOLUTION: NuFlow's trenchless technology preserved the historic temple and the interior columns, causing minimal disruption to the temple's normal operations. NuFlow's pull-in-place structural liner created a new pipe within the existing host pipes, protecting the drain system from future problems.



Omni Hotel: Sewer Drain Line Rehabilitation

LOCATION: Downtown San Diego, California

SITUATION: The waterfront hotel sits at sea level, with its parking structure below the hotel. Beneath an 18" slab, the hotel's sanitary drain line runs below the ocean's water table. The corrosive ocean water ate away at a 70 foot run of 4" cast iron pipe, leaving a large channel missing from the bottom of the pipe.

SOLUTION: After a traditional spot repair by another company failed, the hotel hired NuFlow to install our pull-in-place, seamless liner into the drain system. Our no-dig technology did not cause unsightly construction, and the retrofit liner will protect the pipes from the ocean water.